

Product Innovation

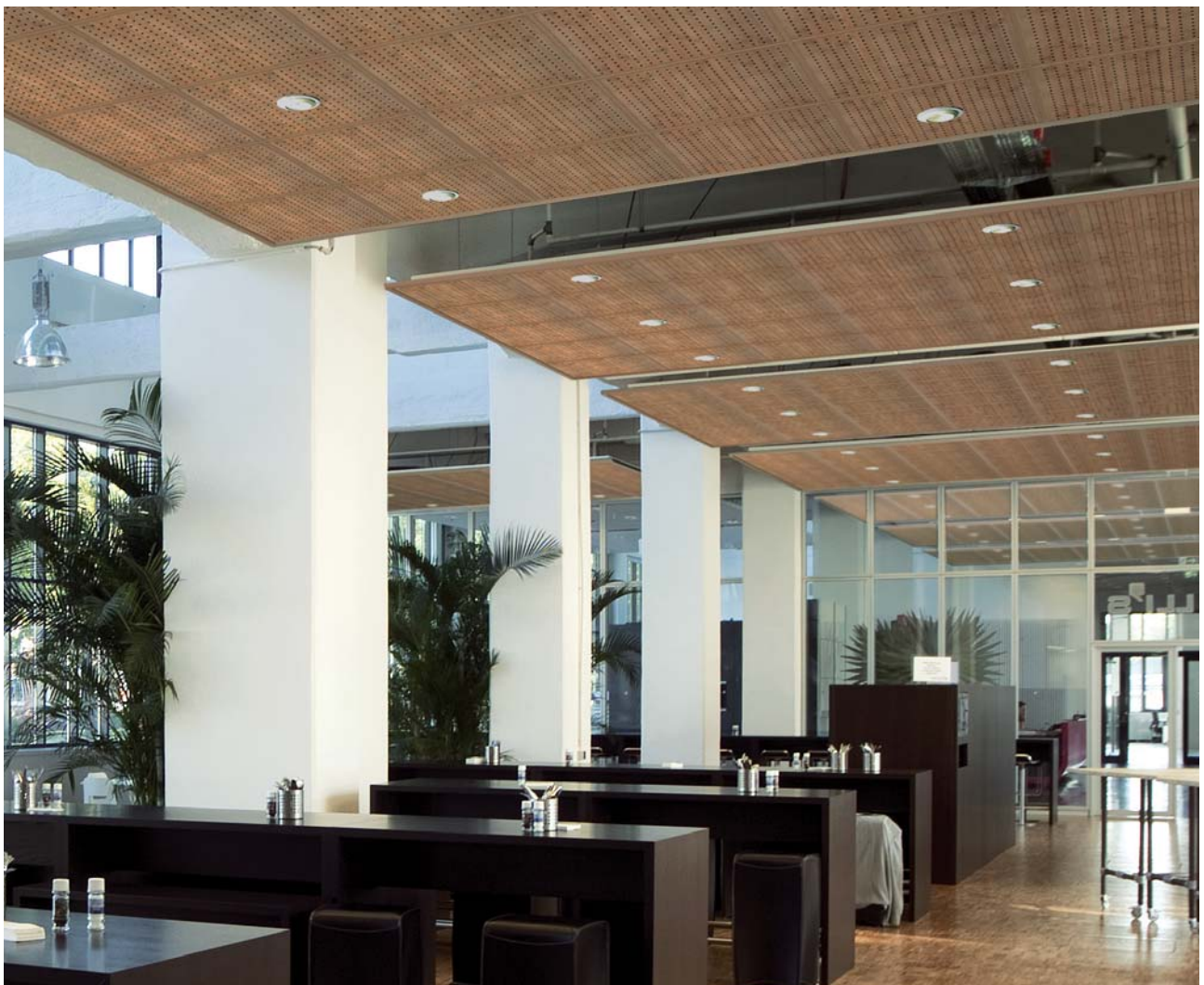
OWAcoustic® premium Bamboo

Strong acoustics with natural design

The natural design

OWAcoustic® premium Bamboo

The trend towards natural architecture is growing rapidly. OWAcoustic® premium Bamboo brings a natural look to the ceiling – combining room acoustics with a warm wooden look and feel.





Performance in Bamboo-Style

OWAcoustic® premium Bamboo offers top acoustical performance (basis are tiles; Plain, Constellation or Regular perforated, with acoustical absorption up to $\alpha_w = 0.70$) and combines that with the look of real bamboo. The printed surfaces are available in Bamboo natural colour and Bamboo dark and three different designs.

Elegant construction

The warm, harmonious and natural look of the tiles is being underlined by system S 19 Teccor or S 3 with matching colour construction system. Result: elegant ceiling surface in a new and restrained natural design.







OWAconsult® suggests

OWAcoustic® premium Bamboo:

Nature for new interior concepts

We want to make available that unique touch of Asian living culture and match that with modern acoustical requirements and fire protection regulations. OWAcoustic® premium Bamboo is an elegant counterpart to wooden floors and also, “solo”, as an acoustical ceiling in lavish entrance halls, waiting areas, conference rooms and cozy restaurants.

OWAcoustic® premium Bamboo – Technical Data

Material	Mineral wool tiles	
		
Building material class	A2-s1,d0 to EN 13501-1	
Thickness	approx. 15 mm or 20 mm	
Colour	printed surface, Bamboo natural colour and Bamboo dark	
Light reflection	on request	
Sound absorption		Plain: $\alpha_w = 0.15$ / NRC = 0.15
		Constellation: $\alpha_w = 0.70$ / NRC = 0.65
		Regular perforated: $\alpha_w = 0.55$ / NRC = 0.60
Moisture reduction*		up to 95% RH
Fire protection*		up to F 120 (DIN 4102) up to REI 120 (EN 13501-2)

* Dependent on system, soffit and other factors



Systems	Exposed System	Concealed System
	Module sizes in mm	S 3
600 x 600	●	●
625 x 625	●	●

OWA

Odenwald Faserplattenwerk GmbH

Dr.-F.-A.-Freundt-Straße 3

63916 Amorbach

Tel. +49 9373 2 01-0

Fax +49 9373 2 01-1 30

www.owa.de · E-Mail: info@owa.de